


About Us

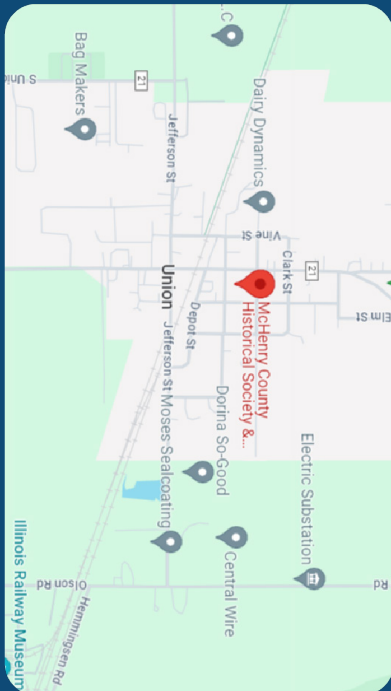
Since 1963, the McHenry County Historical Society strives to engage and educate current and future generations about McHenry County's history.

Stay in Contact



 6422 Main Street
Union, IL 60180

 info@mchenrycountyhistory.org
 815-923-2267 |  gothistory.org



PLAN YOUR VISIT TO THE MCHEMRY COUNTY HISTORY MUSEUM

Situated in the heart of the County, a quick drive from any community.

Operating Hours:

- Tuesday to Friday: 9 am to 4 pm
- Saturday: 10 am to 4 pm

BE PART OF IT!

The McHenry County

History Museum

Uncover the past, explore the present, and help shape and preserve the County's future

Visit Us at GothHistory.org



Membership

Our membership program gives you unique access to the historic McHenry County Historical Society Museum campus, including its sites, programs, exhibits, and special events.

Join the McHenry County Historical Society today and start supporting history! Your membership in the McHenry County Historical Society will allow you to contribute to shaping our county's future while honoring its past.

Affordable Memberships are available for individuals, couples, students, households, organizations, and governmental entities.

Sponsorship

Contact Executive Director Jolie Diepenhorst at jolie@mchenrycountyhhistory.org to discuss giving levels and benefits.



- **Individual Giving**

We are a 501(c)3 non-profit organization. Tax dollars do not support our mission. The Society is funded by membership dues, business sponsorships, admission fees, private donations, and a trust fund.

- **Planned Giving**

IRA rollovers, life insurance, legacy gifts, charitable trusts are a personal and community-focused gesture that helps ensure the continued preservation of our local history for generations to come.

- **Corporate Giving**

The Society offers numerous opportunities for companies to sponsor exhibits, spaces, events, programs, and initiatives.



Engaging Exhibits

Group Tours

The McHenry County History Museum welcomes school, adult, and private groups of all ages and abilities to visit us!

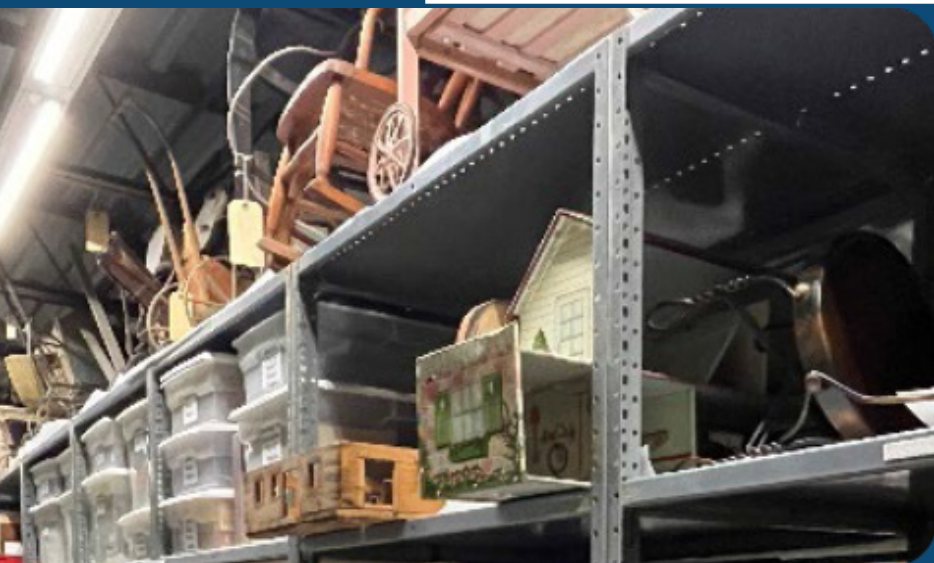
Reservations are required for all group visits to ensure adequate time for scheduling a docent to lead your tour. A docent must lead all organized, non-family groups of 6 or more.

For more information about or to schedule a tour, please contact us at: group tours@mchenrycountyhistory.org or call 815-923-1261

Explore over 11,000 square feet of exhibit space in several rooms that explore the history of McHenry County from the Pleistocene Era to the twentieth century.



McEachren Hall takes patrons through a chronological journey of the county's social history, including topics such as migration, economics, war, and sports. Eckart Hall showcases some of our larger pieces and architectural displays. Within this room is access to the Anderson Gallery, where we revolve many of our most popular artifacts. Finally, Our Deicke Hall exhibit showcases our county's rich agricultural history. The exhibit space is temperature-controlled and handicap accessible, with sitting space throughout.



Collections

The museum's collection is cared for onsite with over 7,500 sq. ft. of space devoted to storing and preserving the artifacts collection, which includes furniture, tools, household and kitchen wares, paintings, etc., and our textile collection, which includes clothing, shoes, historical dress, flags, quilts, tapestries, hats, gloves, handkerchiefs. Our oversized items are stored off-site at a 3,000 sq. ft. facility.

However, not all items can be displayed. Reasons include exceeding display capacity, fragility, or needing restoration. Despite these constraints, our collection remains rich and varied, reflecting the county's history through carefully preserved artifacts.

Research



Our archives house extensive collections containing primary source documents like newspapers, diaries, and photographs, offering authentic glimpses into McHenry County's past.

Explore genealogical resources to trace your family's roots through census records or discover the history of your property. Our collection of local history publications provides a comprehensive overview of the county's evolution.

Need help? Our knowledgeable staff is here to assist you. Uncover the captivating stories that shaped McHenry County at our museum today.

Schedule a Research Appointment or submit a Research Request. Get started today at gothistory.org